



Doctor / Biology
 Biochemistry
 Pharmacy



Verbal / Linguistic
 Journalist
 teacher
 lawyer



Sports
 Guidance / Idea



Existentialist
 Philosopher
 theorist



Quest Systems Pvt. Ltd.

Career Guidance For Students

Qu Test builds on your strengths not weaknesses.
 It is more than just a career test.

It helps shape personality and remove blocks that can come in the way of success.



Hospitality
 travel & tourism
 hotel management



Naturalist
 environmentalist
 farmer
 botanist



Musical / Rhythmic
 musician
 composer
 disk jockey



Interpersonal
 counselor
 politician
 salesperson



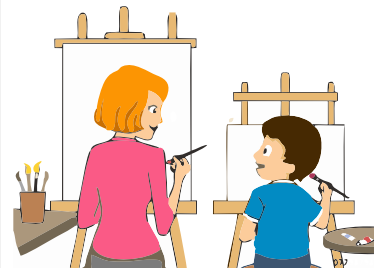
Intrapersonal
 researcher
 novelist
 entrepreneur



Bodily / Kinesthetic
 athlete
 firefighter
 actor



Logical / Mathematical
 engineer
 programmer
 accountants



Visual / Spatial
 navigator
 sculptor
 architect

Mindsets Prevailing today

Parents' Mindsets - Want to give the best educational opportunity to their children. Unknowingly / Knowingly, many a times parents exert pressure on their children to accept their views as the best view and in many cases cause many a heart burn.



School Mindset and Focus - Schools, because of the academic pressure, find it difficult to allocate time and resources to provide customized career guidance for each student along with their parents.

Students' Mindsets - As a consequence, most children are confused in terms of what they want to do going ahead. This confusion leads them to follow the parent / peer group mentality. Should such choice of academics and careers not be in line with their own strengths, such choices lead to life long stress and disappointment.



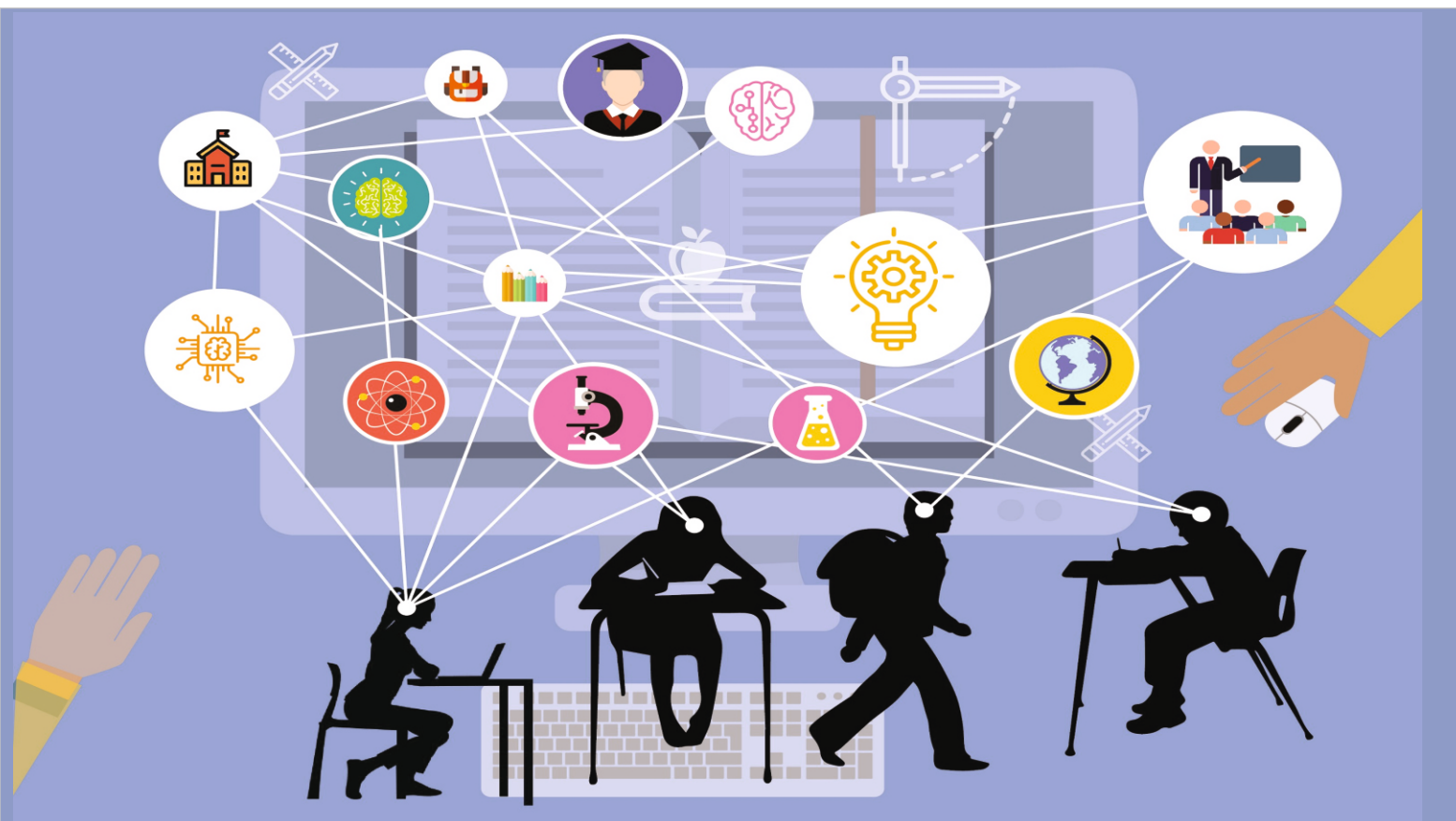
How is Quest's career guidance different from the rest of Career Guidance programs ?

- We are General Management Consultants to Industry with over 50 years of experience. We avoid wrong fits in Industry later, by our career counseling program for 9th, 10th, 11th and 12th class students,
- The input of this process of career counseling is the answers given by students to our test battery. We do not take prior background information about the students either from home or from school.
- Our test battery does not need any prior preparation by the student.
- We cullout 55 parameters unique to the student covering interest, aptitude, personality, temperament, expectation of the student from the career side of life and convincing ability.

- We locate from these parameters, where the students are strong, not just weak.
- We have a massive data base of 250 careers currently, with the norms of 55 parameters each career requires for the student to be successful in that career.
- The computer matches the 55 parameters of the students as measured from his answers to our test battery with what is required for the 250 careers and arranges the 250 careers in the descending order of fit for the student in question.
- The output puts the careers so found in 3 brackets: Priority 1 careers, where the success is almost certain: Priority 2 careers, where the student has capability but has no interest currently: Priority 3 careers not recommended by us to the student.
- By this method we are taking parents and students from confusion, which is a natural result of availability of many careers today, to clarity where they are clear about which out of these many careers, match their child.
- Most career counseling programs consider only aptitudes which account for only 6 out of 55 parameters we measure.
- Even in a few cases where the other career counseling programs cover personality, they do not talk about how to remove the personality blocks that come in the way of being successful in the career. This we do through a copy written (Patented) method of mental block removal to which the students respond spontaneously and succeed in removing the few blocks they may have.
- Thus we first locate the career which matches the student, move backwards from this career to Post Graduation and Under Graduation programs that lead to the career chosen.
- To do the above under graduation and post-graduation program, we then decide what stream student should take in 11th and 12thStandards.
- To get to the stream decided as above, we figure out the cut off marks required in the 10th and 12th class. We give them practical steps and tips to score these cut off marks required.
- Thus we not only locate the matching career for the students but also enable them to reach there.
- As our entire process is software driven, it is entirely objective and avoids the subjectivity of parents, teachers, peers and ourselves too.
- During the career counseling session in the presence of parents and student, we explain to the reason behind the selection of the career for the student. It is an interactive session where we answer all doubts in the minds of parents and the student.
- The consensus so built within the family regarding the career choice is total and clear.
- Over the last 25 years we have covered more than 1.25 lakhs of students. The feedback from some are available in the feedback section of career counseling in our web site: www.thequestsway.in.



- The response after the counseling session that lasts about 4 hours for both the parents and the student is over whelming, euphoric and normally emotional and not just logical.
- The student takes 4 hours to complete the test battery. The parents and students spend another 4 hours in our career Guidance session (as against ½ an hour taken by other career counseling products.) We feel, and the parents confirm to us, that one day invested in our career guidance in the students' life that decide the next 70 years of the students' life is unquestionably the best investment that any parents can do for their children.



For All India queries for the QuTest process, please get in touch with...

(Head Office)

Quest Systems Pvt. Ltd.
B-1, Vallabh Vatika society,
Near Vadsar Bridge
Vadodara - 390 011
Gujarat

Mobile : +91 76000 14869/73

Tel: +91 265 2661830

questsystemsbaroda@gmail.com

Anitha Thiyagarajan

(Branch Office)

9D/6, 2nd Seaward Road,
Valmiki Nagar,
Thiruvalluvar Nagar,
Thiruvanmiyur,
Chennai - 600 041

Mobile : +91 76000 14870

Tel: +91 44 42300163

questsystemschennai@gmail.com

www.thequestway.in